

# Experiences in Garden Design

Haliburton County Master  
Gardeners



# Steps to a Successful Garden

## Part One

- Site Conditions
- Maintenance

## Part Two

- Function
- Style
- Planning Your Garden Space
- Selecting plants

# What are your site's conditions?

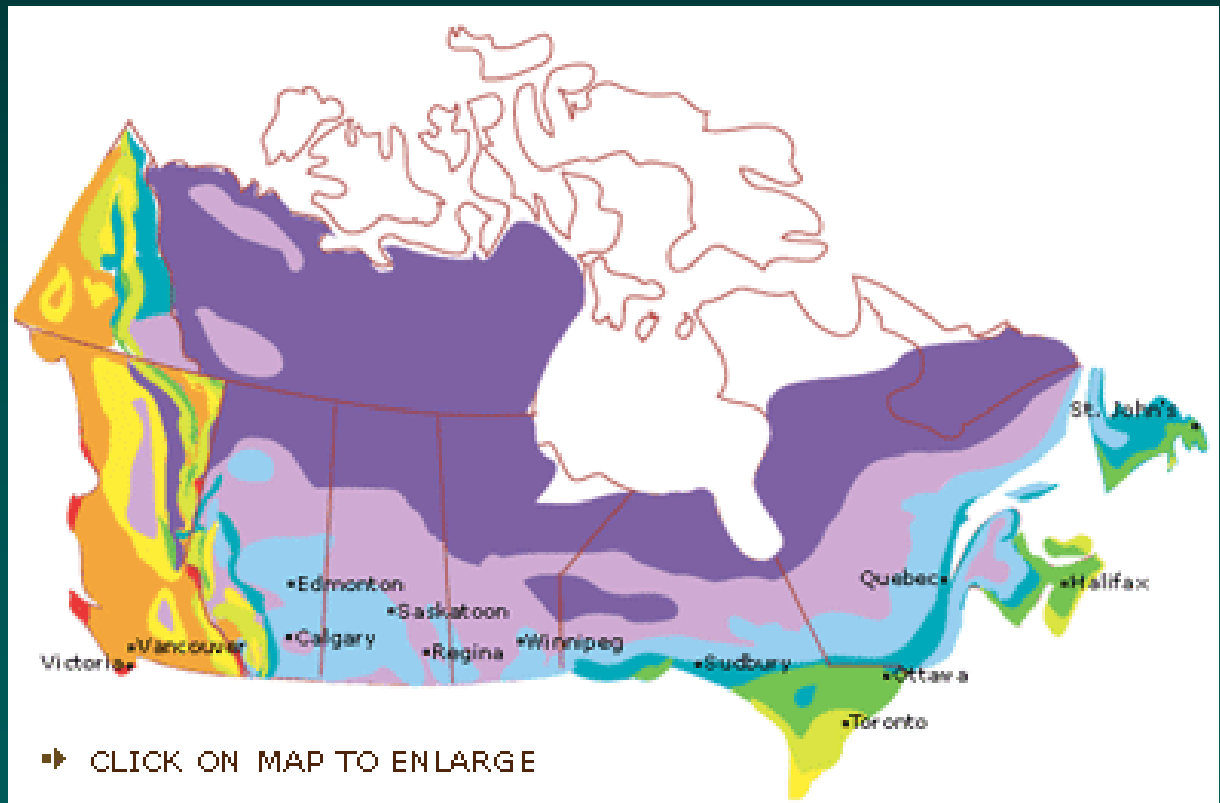
## Know your garden site.

- Does the garden face north, west, south, east
- Sloping or level
- Perpetually dry or wet area



# Determine your Canadian Hardiness Zone

- Plants have a minimum temperature threshold
- zone 0 coldest
- zone 8 warmest
- Local zone 3-4



# Check for Wind

- Observe & record the wind patterns
- Wind affects plants as much as temperature
- Windy sites tend to be hot and dry
- Eastern elevation is the most protected
- South-west and West elevations are the most exposed.



# Light

## Light Categories

<b>Full sun</b>	<b>Six hours uninterrupted</b>
Part shade	4 hours am or pm
Dappled shade	Filtered sun
Full shade	No direct sunlight

Each garden has unique sun patterns.

# Water

## Conditions to consider:

- Type of garden
- Access to water
- Irrigation method
- Garden size
- Budget
- Environmental concerns
- New gardens require frequent watering



# Don't Fight Mother Nature

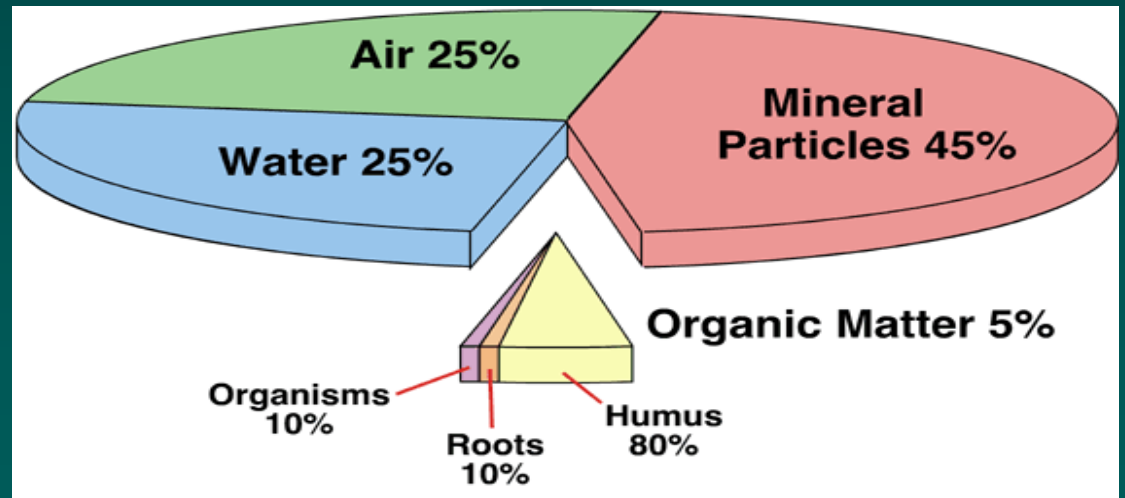
- At a DRY site, plant drought tolerant grasses and perennials
- Damp, boggy conditions call for wetland plants





# SOIL

- The most important factor for a healthy garden
- Characteristics of good soil
  - High in organic matter
  - Retains moisture
  - Rich in N, P, K
  - Friable
  - Good drainage



# Maintenance

Your available time for maintenance, more than anything else, dictates the size and style of your garden.



# Low Maintenance Gardening



- Plants must be:
  - Insect and disease resistant
  - Non-invasive
  - Long lived
- Require
  - Minimal pruning
  - Minimal divisions
  - Minimal fertilizing

# Steps to a Successful Garden

## Part Two

- Function
  - Style
- Planning Your Garden Space
  - Selecting Plants

# Function

- Know how you are going to use the garden
- A garden can't have everything.....
- Focus on the things that are most important to you





Curb Appeal



Relax



Growing Things



Family Fun

# Style



# Space Planning

- Plan your garden views from
  - Inside your house
  - Various positions in the garden





# Don't Overlook Lighting



Research carefully and develop a lighting plan at the beginning of the design process.

Accent exceptional features

Provide functional lighting

Balance the light in the space



# Bubbles

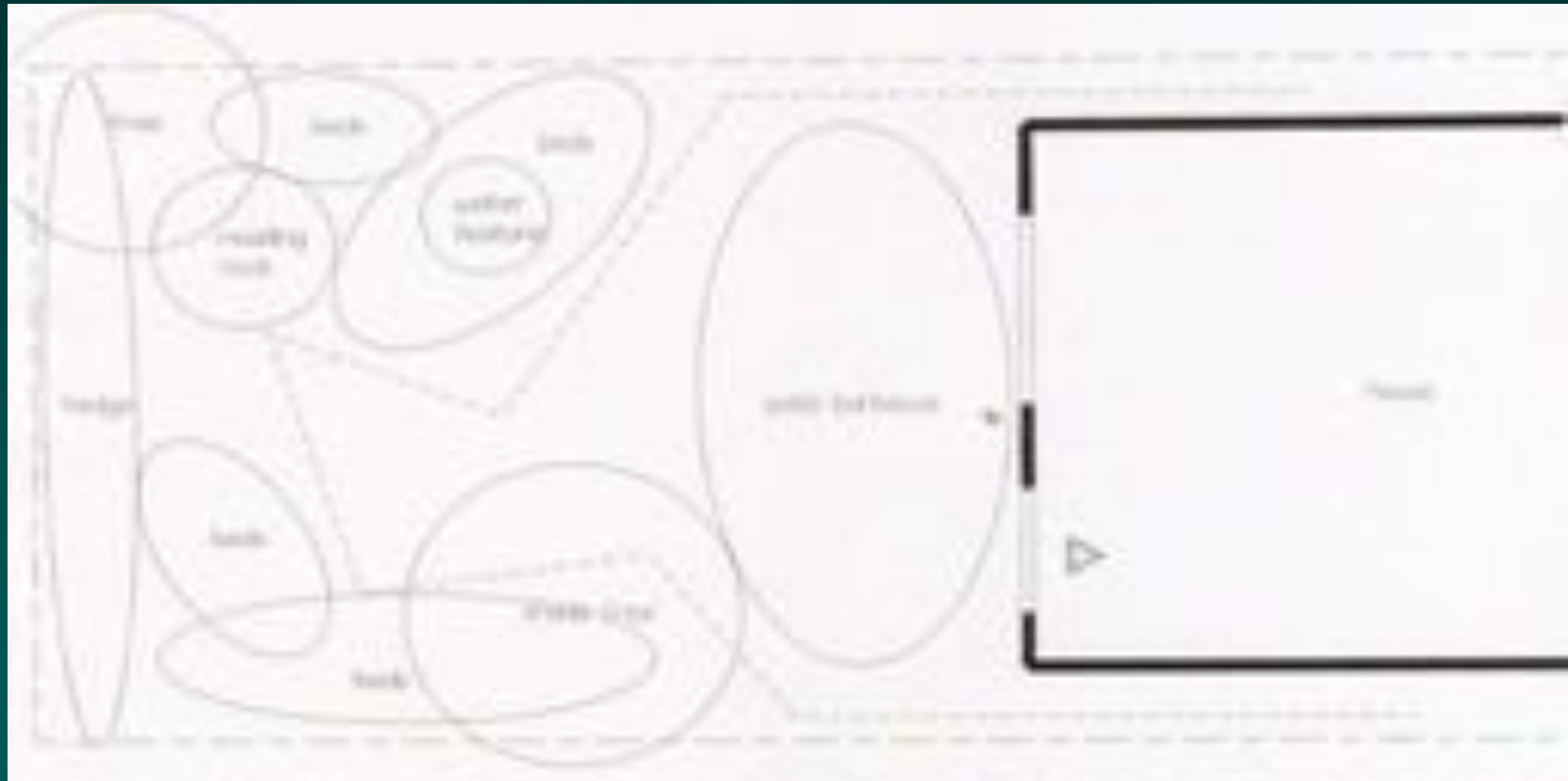
1. Draw a scale diagram of your property
  - $1/8'' = 1'0''$
2. Draw bubbles the size and shape of
  - built structures
  - trees
  - planting beds
3. Repeat #2 until the composition pleases you
4. Lay out the walkways



# Where to Start

- Layout the largest and most important areas first – work down to the smallest
  - Patio, deck, barbecue
  - Children's play area or other structure
  - Water feature
  - Shed
  - Trees
  - Planting beds
- Size guides
  - Patios, 12' diameter is needed for 4' table and chairs
  - Walkways
    - Primary 4' wide
    - Secondary 2' wide
  - Planting beds should be 4' to 6' deep

# Bubble Drawing



# Plant Selection

- Choose the plants *before* you go to the nursery
- Base your selections on:
  - Hardiness
  - Maintenance level
  - Site conditions
  - Size
  - Garden style
  - Colour scheme
  - Multiple seasons of interest



# Order of Selection

- Trees
- Vines
- Shrubs
- Tall perennials
- Medium perennials
- Ground covers
- Annuals
- Use the rule of thirds
  - Tree = 20'
  - Shrub = 6'
  - Perennials = 4' and 2'



# Haliburton County Master Gardeners Design Projects

- Pritchard House - design gardens and plantings
- R. D. Lawrence Centre – design plantings for existing new garden
- Community Centre – design gardens, pathways, screening, plantings

# Pritchard House



## ➤ Project Background



# Pritchard House

➤ Site Description



# Pritchard House

- Design Objectives
- Vision
- Site Design Planning
- Hardscape
- Softscape – Plantings



# Pritchard House

➤ Design Implementation

➤ Outcome



# R. D. Lawrence Centre



- Project Background
- Objectives

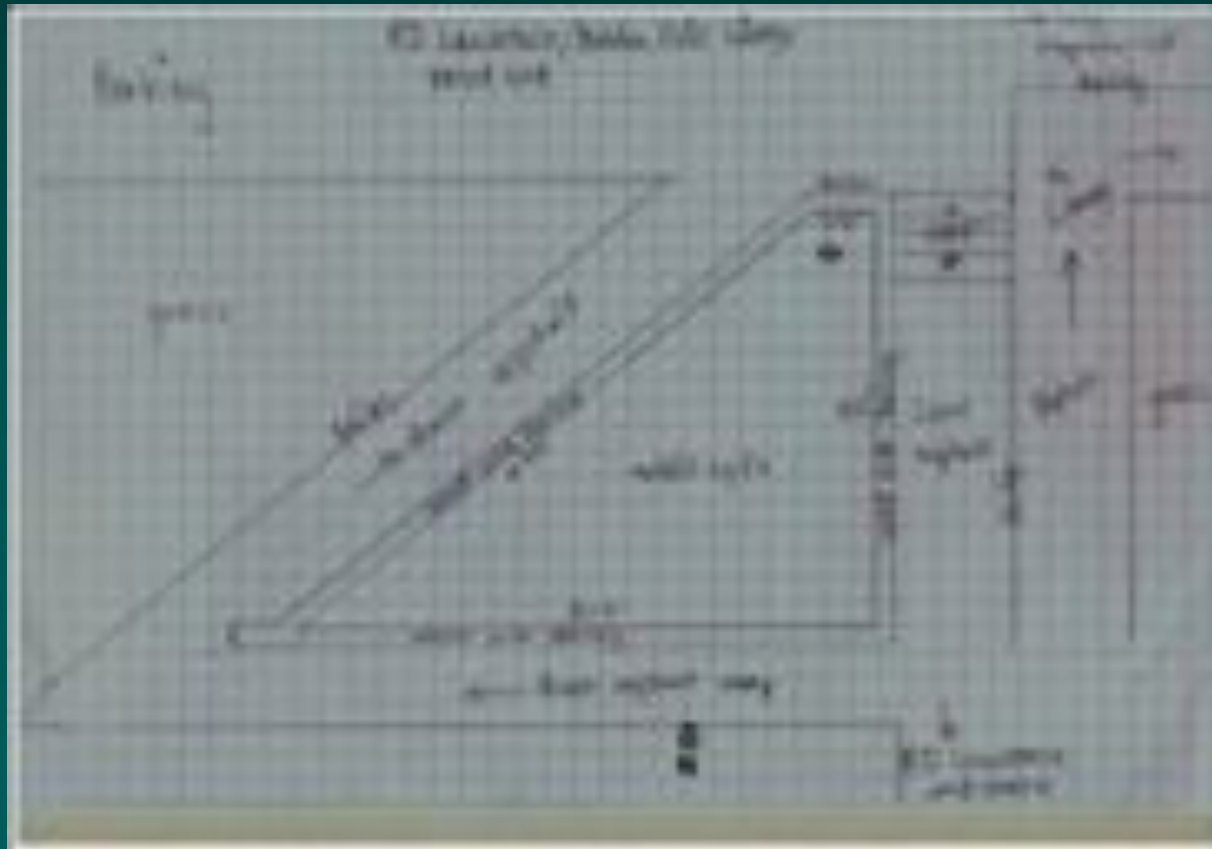
# R. D. Lawrence Centre

## Site Description



# R. D. Lawrence Centre

- Vision
- Site Design Planning



# R. D. Lawrence Centre

➤ Design Implementation

➤ Plantings



# R. D. Lawrence Centre

➤ Outcome



Spring 2010



# R. D. Lawrence Centre



September 2010

# R. D. Lawrence Centre



June 2011

# Minden Community Centre



- Project Background
- Site Description

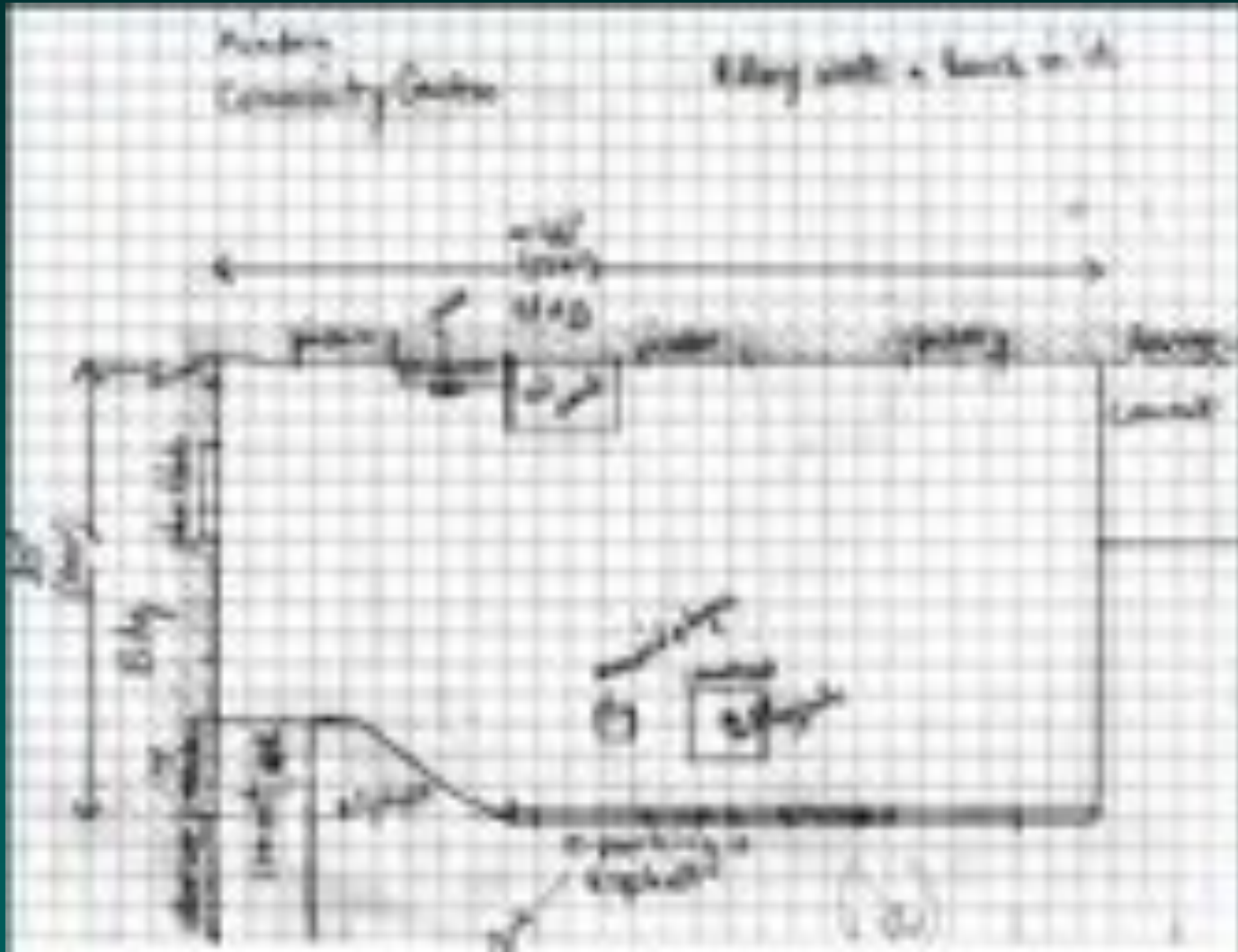
# Minden Community Centre



- Vision
- Design Objectives

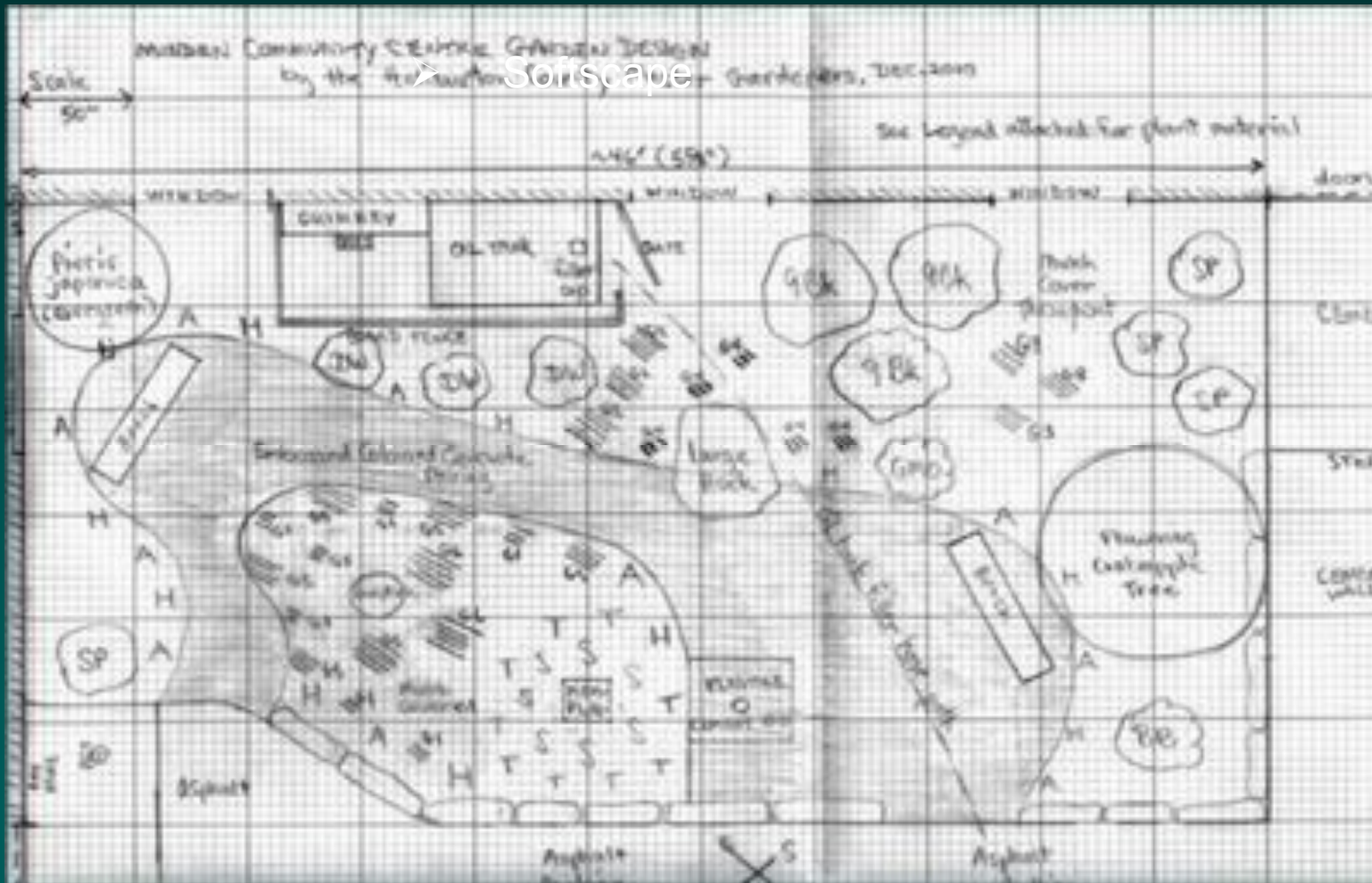
# Minden Community Centre

## ➤ Design



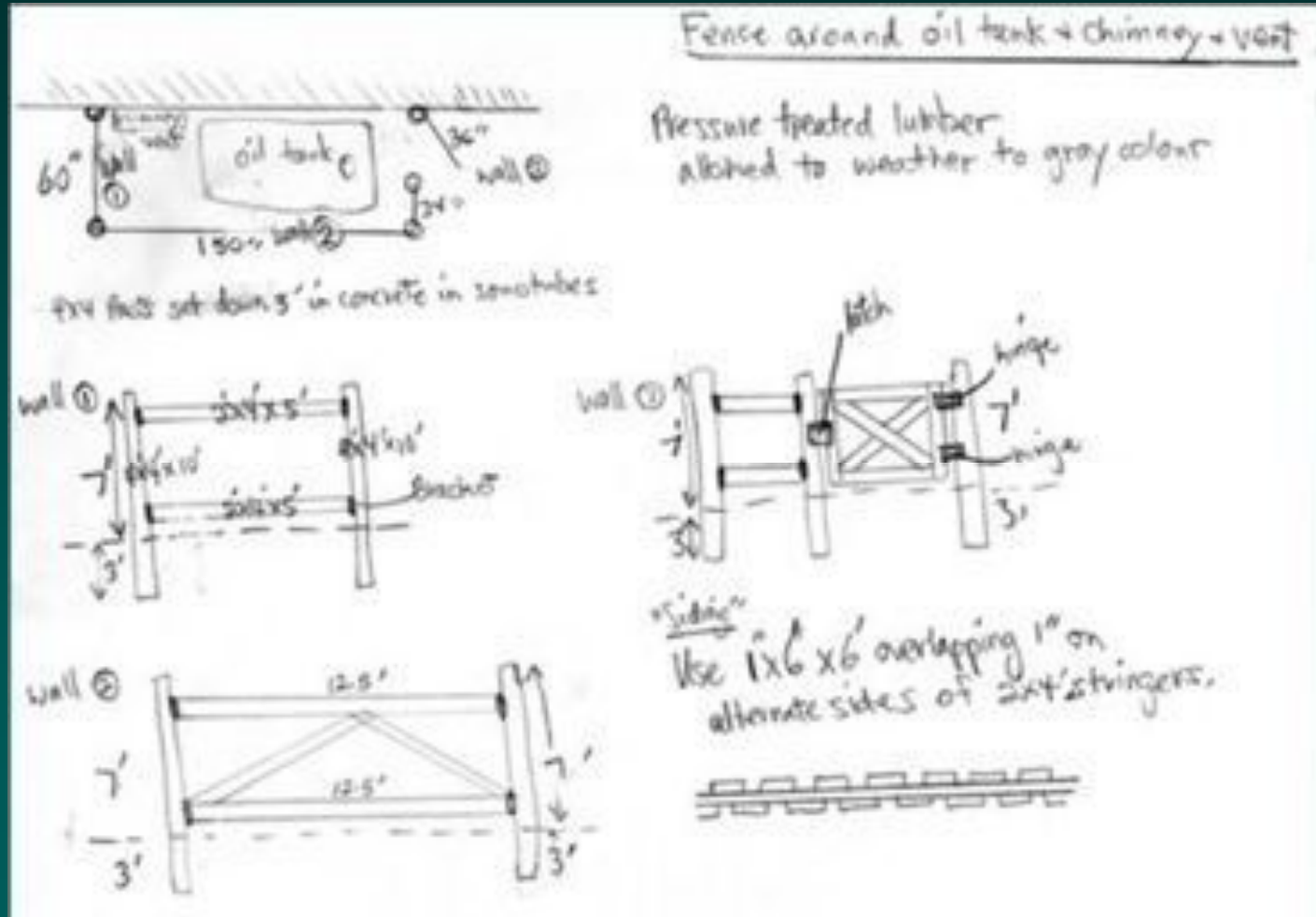
# Minden Community Centre

- Design
- Hardscape/Softscape
- Plantings



# Minden Community Centre

## Design



# Minden Community Centre

- Costing Estimates
- Design Implementation
- Outcome

Minden Community Centre Garden Costing Estimates			
<b>Structural Materials</b>			<b>Estimated Cost</b>
Reinforcing materials			500
Rebar			
Form			
Concrete form			75
Forming			4,000
Concrete pumping			
Rebar brack			
Brack			300
<b>Sub Total</b>			<b>4,875</b>
<b>Softscape Materials</b>			<b>Estimated Cost</b>
	<b>Quantity</b>	<b>Unit Cost</b>	
Grass	1	100	100
Flowers	15	20	300
Shrubs	20	20	400
Perennials	20	20	400
Soils			50
Stake	20	10	200
<b>Sub Total</b>	<b>77 items</b>	<b>747.00</b>	<b>1,450</b>
<b>Labor - supplied by Township</b>			
<b>Total Cost</b>			<b>6,325</b>



# New Projects

- Minden Library
- Abbey Gardens

? Questions ?

# Bibliography

How to Make a Garden, Marjorie Harris

Manual of Wood Landscape Plants, Michael A. Dirr

Planting Design, Piet Oudolf and Noel Kingsbury

Residential Landscape Architecture, Norman Booth and James Hiss

Small Gardens, John Brooks

The Welcoming Garden, Gordon Heyward

The Well-Designed Mixed Garden, Tracy DiSabato-Aust

# Presented by:

## Haliburton County Master Gardeners

- Email: [halmastergardener@gmail.com](mailto:halmastergardener@gmail.com)
- Website: <http://haliburtonmastergardener.ca/>

This presentation was originally developed by  
Durham Master Gardeners  
email: [durhammg@hotmail.com](mailto:durhammg@hotmail.com)

# Steps To A Successful Garden - Summary

- Understand
  - Site
  - Soil
  - Maintenance tolerance
  - Intended garden uses
- Create a plan
- Choose appropriate plants

# What are Your Site's Conditions?

- Know your garden site
  - Does garden face north, west, south, east
  - Sloping or level
  - Perpetually dry or wet area
- Find out hardiness zone
  - 0 = coldest; 8 = warmest
- Observe and record your site's
  - Sun & Wind patterns
- Determine your water needs and capacity

# Soil

- Soil is the most important ingredient for a successful garden
- Types of soil
  - Sandy
  - Clay
  - Sandy loam
  - Alkaline or acid?
- Soil improvements
  - 3" of organic material to beds in spring or late fall
  - New developments
    - rototill to a dept of 12"
    - Mix in 4" to 6" of organic material
    - Following years, top dress with organic amendments

# Maintenance !!!

- Available time dictates the size & style of your garden
- Routine tasks
  - Weeding
  - Deadheading
  - Monitor beds for dryness
  - Water as needed
- Seasonal tasks
  - Clean up plant and leaf debris
  - Prune trees and shrubs
  - Check equipment: tools, water feature components
  - Fertilize
  - Top up mulch
  - Empty composter
  - Plant, divide, protect tender plants and shrubs

# Garden Use

- Be realistic – focus on what's important to you
  - Curb appeal
  - Retreat
  - Entertaining
  - Family fun
  - Ornamental and vegetable gardening
- Compliment your home's architectural style
- Understand your personal garden style
  - Cottage
  - Comtemplative
  - Contemporary
  - Formal
  - Informal
  - Japanese



# PLAN

- PLAN garden views
- PLAN areas of use - largest & most important 1<sup>st</sup>
  - Patio, deck, barbecue
  - Play structure
  - Shed
  - Trees
  - Planting beds
  - Gazebo
  - Water feature
  - Walkways (primary 4' wide, secondary 2' wide)
- PLAN for lighting
- PLAN the spaces with “bubbles”

# Plant Selection

- Base plant selection on
  - Hardiness zone
  - Maintenance level
  - Site conditions
  - Size of your space
  - Garden style
  - Colour scheme
  - Multiple seasons of interest
- NO impulse purchases – chose plants BEFORE going to the nursery

# Order of Plant Selection

- Trees
- Vines
- Shrubs
- Tall perennials
- Medium perennials
- Ground covers
- Annuals

# Tips for Plant Selection

- Avoid overplanting – follow spacing guides
- Try to plant in blocks
- Stagger the bloom periods
- Plant native trees and shrubs
- Choose sun/shade, drought/moisture tolerant based on your site

# Native Trees and Shrubs

- Arrow-wood Viburnum *Viburnum, acerfolium*
- Black Elderberry *Sambucus canadensis*
- Canadian Hemlock *Tsuga canadensis*
- Chokecherry *Prunus virginiana*
- Ninebark *Physocarpus opulifolius*
- Pagoda Dogwood *Cornus alternifolia*
- Redbud *Cercis canadensis*
- Red Oak *Quercus rubra*
- Red Osier Dogwood *Cornus stolonifera*
- Serviceberry *Amelanchier canadensis*
- Winterberry *Ilex verticillata*
- White Pine *Pinus strobus*
- White Spruce *Picea glauca*

# Bibliography

- How to Make a Garden; Marjorie Harris
- Manual of Wood Landscape Plants; Michael A. Dirr
- Planting Design; Piet Oudolf and Noel Kingsbury
- Residential Landscape Architecture; Norman Booth and James Hiss
- Small Gardens; John Brooks
- The Welcoming Garden; Gordon Heyward
- The Well-Designed Mixed Garden; Tracy DiSabato-Aust

# Haliburton County Master Gardeners

## ■ Contact Information

– Co-chair: Janice Hardy

■ 705-754-9183

– Email: [halmastergardener@gmail.com](mailto:halmastergardener@gmail.com)

– Website: <http://haliburtonmastergardener.ca/>